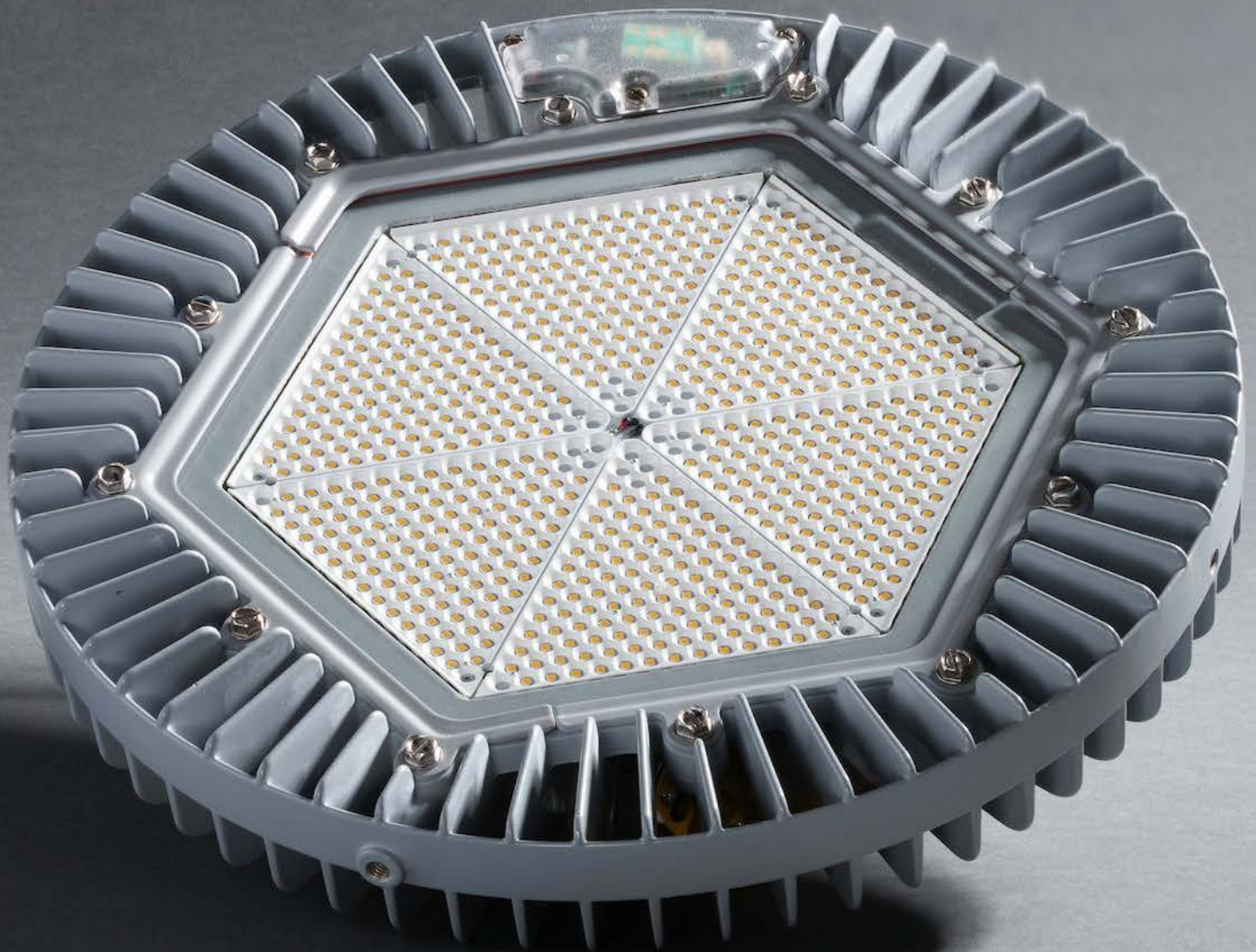


Dialight

MADE TO STOCK

Catalog



2024 Q3

Dialight LED Area Light

Stock Part Numbers



Product	Brand	Part Number	Description
Area Light	SafeSite®	ALC7BC27NBWNGN	SafeSite Area Light, 360°, 7000 Lumens, 52 Watts, 100 - 277 VAC, Cool White 5000K, Glass - Clear, Gray, Swivel Bracket, Locking 0-90° - 316 SS, 10' [3 meter] Power Cable, [UL 844 Class I Div. 1]
Area Light	SafeSite®	ALC7BC27NNWNGN	SafeSite Area Light, 360°, 7000 Lumens, 52 Watts, 100 - 277 VAC, Cool White 5000K, Glass - Clear, Gray, 10' [3 meter] Power Cable, [UL 844 Class I Div. 1]
Area Light	SafeSite®	ALD5BB56NNWNGN	SafeSite Area Light, 360°, 5700 Lumens, 58 Watts, 347 - 480 VAC, Cool White 5000K, Polycarbonate - Diffused, Gray, 10' (3 meter) Power Cable, [UL 844 Class I Div. 2]
Area Light	SafeSite®	ALD5BC25NCNNGN	SafeSite Area Light, 360°, 5300 Lumens, 40 Watts, 100 - 277 VAC, Cool White 5000K, Polycarbonate - Diffused, Gray, Retro-fit Adapter - Crouse-Hinds - Champ, [UL 844 Class I Div. 2]
Area Light	SafeSite®	ALD5BC25NNWNGN	SafeSite Area Light, 360°, 5300 Lumens, 40 Watts, 100 - 277 VAC, Cool White 5000K, Polycarbonate - Diffused, Gray, 10' [3 meter] Power Cable, [UL 844 Class I Div. 2/Class II Div. 1]
Area Light	SafeSite®	ALD5BC26NNWNGN	SafeSite Area Light, 360°, 5300 Lumens, 40 Watts, 100 - 277 VAC, Cool White 5000K, Polycarbonate - Diffused, Gray, 10' [3 meter] Power Cable, [UL 844 Class I Div. 2/Class II Div. 1]
Area Light	SafeSite®	ALD7BC25NCNNGN	SafeSite Area Light, 360°, 5700 Lumens, 40 Watts, 100 - 277 VAC, Cool White 5000K, Glass - Clear, Gray, Retro-fit Adapter - Crouse-Hinds - Champ, [UL 844 Class I Div. 2/Class II Div. 1]
Area Light	SafeSite®	ALD7BC26NNWNGN	SafeSite Area Light, 360°, 5700 Lumens, 40 Watts, 100 - 277 VAC, Cool White 5000K, Glass - Clear, Gray, 10' [3 meter] Power Cable, [UL 844 Class I Div. 2/Class II Div. 1]
Area Light	SafeSite®	ALF5BC27NNWNGN	SafeSite Area Light, 360°, 6700 Lumens, 52 Watts, 100 - 277 VAC, Cool White 5000K, Polycarbonate - Diffused, Gray, 10' [3 meter] Power Cable, [UL 844 Class I Div. 1]
Area Light	DuroSite®	ALU5BB56NNWNGN	DuroSite Area Light, 360°, 5700 Lumens, 58 Watts, 347 - 480 VAC, Cool White 5000K, Polycarbonate - Diffused, Gray, 10' (3 meter) Power Cable, [UL 1598/A]
Area Light	Vigilant®	ALU5BC25NNWNGN	Vigilant Area Light, 360°, 5300 Lumens, 40 Watts, 100 - 277 VAC, Cool White 5000K, Polycarbonate - Diffused, Gray, 10' [3 meter] Power Cable, [UL 1598/A]
Area Light	Vigilant®	ALU5BC26NNWNGN	Vigilant Area Light, 360°, 5300 Lumens, 40 Watts, 100 - 277 VAC, Cool White 5000K, Polycarbonate - Diffused, Gray, 10' [3 meter] Power Cable, [UL 1598/A]
Area Light	Vigilant®	ALU5BC27NNWNGN	Vigilant Area Light, 360°, 6700 Lumens, 52 Watts, 100 - 277 VAC, Cool White 5000K, Polycarbonate - Diffused, Gray, 10' [3 meter] Power Cable, [UL 1598/A]
Area Light	SafeSite®	ALC7BC27NBWNGN	SafeSite Area Light, 360°, 7300 Lumens, 52 Watts, 100 - 277 VAC, Cool White 5000K, Glass - Clear, Swivel Bracket, Locking 0-90 Degrees - 316 SS, 10' [3 meter] Power Cable, Gray, [UL 844 Class I Div. 1]
Area Light	SafeSite®	ALC7BC27NNWNGN	SafeSite Area Light, 360°, 7300 Lumens, 52 Watts, 100 - 277 VAC, Cool White 5000K, Glass - Clear, 10' [3 meter] Power Cable, Gray, [UL 844 Class I Div. 1]
Area Light	SafeSite®	ALD5BC25NNWNGN	SafeSite Area Light, 360°, 5300 Lumens, 40 Watts, 100 - 277 VAC, Cool White 5000K, Polycarbonate - Diffused, 10' [3 meter] Power Cable, Gray, [UL 844 Class I Div. 2/Class II Div. 1]
Area Light	SafeSite®	ALD5BB56NNWNGN	SafeSite Area Light, 360°, 6000 Lumens, 58 Watts, 347 - 480 VAC, Cool White 5000K, Polycarbonate - Diffused, 10' [3 meter] Power Cable, Gray, [UL 844 Class I Div. 2]
Area Light	SafeSite®	ALF5BC27NNWNGN	SafeSite Area Light - Gen II, 360° Circular, 7250 Lumens, 69 Watts, 100-277V AC, Cool White, Clear Polycarbonate Lens, Anti-Static Coating [CID2, CID1, CID2, CID1, CID2]
Area Light	Dialight	HZXCBL2	Accessory - Safety Cable Kit
Area Light	Dialight	HZXJB075	Accessory- 0.75" Ceiling / Wall / Pole Mount Junction Box
Area Light	Dialight	HZXJB075PC1	Accessory- 0.75" Ceiling / Wall / Pole Mount Junction Box - with 120VAC Photocell
Area Light	Dialight	HZXS45	Area Light Stanchion Mount 45° Bracket
Area Light	Dialight	HZXSAFECBLS	Accessory - Safety Cables - AL - 4'
Area Light	Dialight	HZXSFAKIT	Accessory- Safety cable kit

DISCLAIMER. All product information provided is, to the best of Dialight's knowledge, accurate as of the date of publication. When ordering, refer to www.dialight.com for current versions of: (a) relevant product documentation (including the relevant product data sheets); (b) Dialight terms and conditions of sale; and, (c) the relevant product warranty. To the extent that any contract is deemed formed between Dialight and the purchaser of Dialight products and/or an end-user, versions of documents available at www.dialight.com as at the date of sale shall be the versions incorporated therein. In the event of any discrepancy between this document or information provided at www.dialight.com, the latter shall prevail.

Dialight LED Area Light

Stock Part Numbers



Product	Brand	Part Number	Description
Area Light	Dialight	HZXSFAKIT	Accessory- Safety Tabs
Area Light	Dialight	HZXSTAN100S	Accessory- 1.00" (1.315" Pole OD) Slip-Fit Stanchion Mount Junction Box with Junction box mounting hardware (for Area Light products, requires bracket HZXW3 or HZXW7 not included. Brackets not required for Flood Light products)
Area Light	Dialight	HZXSTAN125S	Accessory- 1.25" (1.660" Pole OD) Slip-Fit Stanchion Mount Junction Box with Junction box mounting hardware (for Area Light products, requires bracket HZXW3 or HZXW7 not included. Brackets not required for Flood Light products)
Area Light	Dialight	HZXSTAN150S	Accessory- 1.50" (1.900" Pole OD) Slip-Fit Stanchion Mount Junction Box with Junction box mounting hardware (for Area Light products, requires bracket HZXW3 or HZXW7 not included. Brackets not required for Flood Light products)
Area Light	Dialight	HZXSTAN150T	Accessory- 1.50" (1.900" Pole OD) NPT Threaded Stanchion Mount Junction Box with Junction box mounting hardware (for Area Light products, requires bracket HZXW3 or HZXW7 not included. Brackets not required for Flood Light products)
Area Light	Dialight	HZXSTAN200S	Accessory- 2.00" (2.375" Pole OD) Slip-Fit Stanchion Mount Junction Box with Junction box mounting hardware (for Area Light products, requires bracket HZXW3 or HZXW7 not included. Brackets not required for Flood Light products)
Area Light	Dialight	HZXSTAN200T	Accessory- 2.00" (2.375" Pole OD) NPT Threaded Stanchion Mount Junction Box with Junction box mounting hardware (for Area Light products, requires bracket HZXW3 or HZXW7 not included. Brackets not required for Flood Light products)
Area Light	Dialight	HZXTHAP	Appleton MercMaster III - Retrofit Adapter with retrofit wiring box
Area Light	Dialight	HZXTHCH	Crouse Hinds Champ - Retrofit Adapter with retrofit wiring box
Area Light	Dialight	HZXTHGE	GE Filtr-Gard - Retrofit Adapter with retrofit wiring box
Area Light	Dialight	HZXTHKL	Killark Certilite & Certilite V - Retrofit Adapter with retrofit wiring box
Area Light	Dialight	HZXTHM2	Appleton MercMaster II - Retrofit Adapter with retrofit wiring box
Area Light	Dialight	HZXTHP3	Holophane PetroLux II & III - Retrofit Adapter with retrofit wiring box
Area Light	Dialight	HZXHTB	Thomas and Betts Hazlux - Retrofit Adapter with retrofit wiring box
Area Light	Dialight	HZXUMA	Accessory - Area Light UMA Hub
Area Light	Dialight	HZXW01	Accessory - Area Light Wall Mount Bracket
Area Light	Dialight	HZXW3	Accessory- Stainless Steel bracket with mounting hardware
Area Light	Dialight	HZXW4	Accessory- Stainless Steel bracket with Pipe Clamp and mounting hardware
Area Light	Dialight	HZXW45	Accessory - Area Light Wall Mount 45° Bracket
Area Light	Dialight	HZXW7	Accessory- Aluminum bracket with mounting hardware
Area Light	Dialight	HZXW8	Accessory- Aluminum bracket with Pipe Clamp and mounting hardware
Area Light	Vigilant®	ALU5BC26NNWNGN	Vigilant Area Light, 360°, 5300 Lumens, 40 Watts, 100 - 277 VAC, Cool White 5000K, Polycarbonate - Diffused, 10' [3 meter] Power Cable, Gray, [UL 1598/A]
Area Light	DuroSite®	ALU5BB56NNWNGN	DuroSite Area Light, 360°, 6000 Lumens, 58 Watts, 347 - 480 VAC, Cool White 5000K, Polycarbonate - Diffused, 10' [3 meter] Power Cable, Gray, [UL 1598/A]

DISCLAIMER. All product information provided is, to the best of Dialight's knowledge, accurate as of the date of publication. When ordering, refer to www.dialight.com for current versions of: (a) relevant product documentation (including the relevant product data sheets); (b) Dialight terms and conditions of sale; and, (c) the relevant product warranty. To the extent that any contract is deemed formed between Dialight and the purchaser of Dialight products and/or an end-user, versions of documents available at www.dialight.com as at the date of sale shall be the versions incorporated therein. In the event of any discrepancy between this document or information provided at www.dialight.com, the latter shall prevail.

Dialight LED Floodlight

Stock Part Numbers



Product	Brand	Part Number	Description
Floodlight	ProSite	F1B76L2FDENVGN	ProSite F1 Floodlight, NEMA 6 (Wide 125°), 30km Model, 120-277 VAC/120-250 VDC, Neutral White 4000K, Integrated PC Lens + Glass Lens Cover, Gray, Angled Bracket, DALI / 0-10V, [ATEX/IECEX Zone 2]
Floodlight	ProSite	F1D76B2BDENVGN	ProSite F1 Flood, NEMA 6 (Wide 125°), 12km Model, 81 Watts, 100-277VAC/120-250VDC, Cool White 5000K, Integrated PC Lens + Glass Lens Cover, Angled Bracket, Gray, DALI / 0-10V [UL 844 CID2]
Floodlight	ProSite	F1D76B2CDENVGN	ProSite F1 Flood, NEMA 6 (Wide 125°), 18km Model, 124 Watts, 100-277VAC/120-250VDC, Cool White 5000K, Integrated PC Lens + Glass Lens Cover, Angled Bracket, Gray, DALI / 0-10V [UL 844 CID2]
Floodlight	ProSite	F1D76B5BDENVGN	ProSite F1 Flood, NEMA 6 (Wide 125°), 12km Model, 84 Watts, 347 - 480VAC, Cool White 5000K, Integrated PC Lens + Glass Lens Cover, Angled Bracket, Gray, DALI / 0-10V [UL 844 CID2]
Floodlight	ProSite	F1D76B5CDENVGN	ProSite F1 Flood, NEMA 6 (Wide 125°), 18km Model, 128 Watts, 347 - 480VAC, Cool White 5000K, Integrated PC Lens + Glass Lens Cover, Angled Bracket, Gray, DALI / 0-10V [UL 844 CID2]
Floodlight	ProSite	F1D77B2BDENVGN	ProSite F1 Flood, NEMA 7x6 (Very Wide 131° x 108°), 12km Model, 81 Watts, 100-277VAC/120-250VDC, Cool White 5000K, Integrated PC Lens + Glass Lens Cover, Angled Bracket, Gray, DALI / 0-10V [UL 844 CID2]
Floodlight	ProSite	F1D77B2CDENVGN	ProSite F1 Flood, NEMA 7x6 (Very Wide 131° x 108°), 18km Model, 124 Watts, 100-277VAC/120-250VDC, Cool White 5000K, Integrated PC Lens + Glass Lens Cover, Angled Bracket, Gray, DALI / 0-10V [UL 844 CID2]
Floodlight	ProSite	F1D77B5BDENVGN	ProSite F1 Flood, NEMA 7x6 (Very Wide 131° x 108°), 12km Model, 84 Watts, 347 - 480VAC, Cool White 5000K, Integrated PC Lens + Glass Lens Cover, Angled Bracket, Gray, DALI / 0-10V [UL 844 CID2]
Floodlight	Dialight	F1NMSOR	F1 Visor NEMA optics
Floodlight	ProSite	F1UN6B2BDENVGN	ProSite F1 Flood, NEMA 6 (Wide 125°), 12km Model, 81 Watts, 100-277VAC/120-250VDC, Cool White 5000K, Integrated PC Lens, Angled Bracket, Gray, DALI / 0-10V [UL 1598/A]
Floodlight	ProSite	F1UN6B2CDENVGN	ProSite F1 Flood, NEMA 6 (Wide 125°), 18km Model, 124 Watts, 100-277VAC/120-250VDC, Cool White 5000K, Integrated PC Lens, Angled Bracket, Gray, DALI / 0-10V [UL 1598/A]
Floodlight	ProSite	F1UN6B2EDENVGN	ProSite F1 Flood, NEMA 6 (Wide 125°), 24km Model, 175 Watts, 100-277VAC/120-250VDC, Cool White 5000K, Integrated PC Lens, Angled Bracket, Gray, DALI / 0-10V [UL 1598/A]
Floodlight	ProSite	F1UN6B5BDENVGN	ProSite F1 Flood, NEMA 6 (Wide 125°), 12km Model, 84 Watts, 347 - 480VAC, Cool White 5000K, Integrated PC Lens, Angled Bracket, Gray, DALI / 0-10V [UL 1598/A]
Floodlight	ProSite	F1UN6B5CDENVGN	ProSite F1 Flood, NEMA 6 (Wide 125°), 18km Model, 128 Watts, 347 - 480VAC, Cool White 5000K, Integrated PC Lens, Angled Bracket, Gray, DALI / 0-10V [UL 1598/A]
Floodlight	ProSite	F1UN6B5EDENVGN	ProSite F1 Flood, NEMA 6 (Wide 125°), 24km Model, 179 Watts, 347 - 480VAC, Cool White 5000K, Integrated PC Lens, Angled Bracket, Gray, DALI / 0-10V [UL 1598/A]
Floodlight	ProSite	F1UN7B2BDENVGN	ProSite F1 Flood, NEMA 7x6 (Very Wide 131° x 108°), 12km Model, 81 Watts, 100-277VAC/120-250VDC, Cool White 5000K, Integrated PC Lens, Angled Bracket, Gray, DALI / 0-10V [UL 1598/A]
Floodlight	ProSite	F1UN7B2CDENVGN	ProSite F1 Flood, NEMA 7x6 (Very Wide 131° x 108°), 18km Model, 124 Watts, 100-277VAC/120-250VDC, Cool White 5000K, Integrated PC Lens, Angled Bracket, Gray, DALI / 0-10V [UL 1598/A]
Floodlight	ProSite	F1UN7B5BDENVGN	ProSite F1 Flood, NEMA 7x6 (Very Wide 131° x 108°), 12km Model, 84 Watts, 347 - 480VAC, Cool White 5000K, Integrated PC Lens, Angled Bracket, Gray, DALI / 0-10V [UL 1598/A]
Floodlight	Dialight	F2AVISOR	F2 Visor Asymmetric Optics
Floodlight	Dialight	F2NMSOR	F2 Visor NEMA Optics
Floodlight	ProSite	F2UN6B8LDENVGN	ProSite F2 Flood, NEMA 6 (Wide 125°), 48km Model, 346 Watts, 120-277VAC/120-250VDC 10kV Surge, Cool White 5000K, Integrated PC Lens, Angled Bracket, Gray, Dimming (0-10V) [UL 1598/A]
Floodlight	ProSite	F2UN6B8NDENVGN	ProSite F2 Flood, NEMA 6 (Wide 125°), 60km Model, 484 Watts, 120-277VAC/120-250VDC 10kV Surge, Cool White 5000K, Integrated PC Lens, Angled Bracket, Gray, Dimming (0-10V) [UL 1598/A]
Floodlight	ProSite	F2UN6B9LDENVGN	ProSite F2 Flood, NEMA 6 (Wide 125°), 48km Model, 357 Watts, 347 - 480VAC 10kV Surge, Cool White 5000K, Integrated PC Lens, Angled Bracket, Gray, Dimming (0-10V) [UL 1598/A]
Floodlight	ProSite	F2UN6B9NDENVGN	ProSite F2 Flood, NEMA 6 (Wide 125°), 60km Model, 499 Watts, 347 - 480VAC 10kV Surge, Cool White 5000K, Integrated PC Lens, Angled Bracket, Gray, Dimming (0-10V) [UL 1598/A]

DISCLAIMER. All product information provided is, to the best of Dialight's knowledge, accurate as of the date of publication. When ordering, refer to www.dialight.com for current versions of: (a) relevant product documentation (including the relevant product data sheets); (b) Dialight terms and conditions of sale; and, (c) the relevant product warranty. To the extent that any contract is deemed formed between Dialight and the purchaser of Dialight products and/or an end-user, versions of documents available at www.dialight.com as at the date of sale shall be the versions incorporated therein. In the event of any discrepancy between this document or information provided at www.dialight.com, the latter shall prevail.

Dialight LED Floodlight

Stock Part Numbers

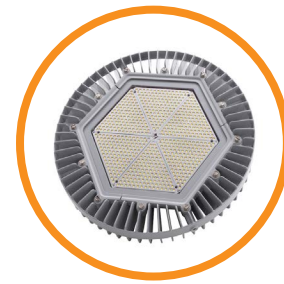


Product	Brand	Part Number	Description
Floodlight	Dialight	FLWG	Wire Guard
Floodlight	Dialight	FLX1HBXSS	304 Stainless steel forward throw bracket
Floodlight	Dialight	FLX1RAB20DB	Right Angle Bracket, 2"
Floodlight	Dialight	FLX1RAB20LG	RIGHT ANGLE BRKT, 2", GRAY
Floodlight	Dialight	FLX1TPT20DB	Tenon topper and pole set screws
Floodlight	Dialight	FLX1TPT20LG	Tenon topper and pole set screws, Gray
Floodlight	Dialight	FLX2LBH20DB	2 Light Bull Horn Bracket
Floodlight	Dialight	FLX2LBH20LG	2 Light Bull Horn Brkt, Gray
Floodlight	Dialight	FLX2RSR20DB	2 Light Round Square Round Bracket
Floodlight	Dialight	FLX3LBH20DB	3 Light Bull Horn Bracket
Floodlight	Dialight	FLX3RPA20DB	Reducer for 3" OD round pole top
Floodlight	Dialight	FLX3RSR20DB	3 Light Round Square Round Bracket
Floodlight	Dialight	FLX4LBH20DB	4 Light Bull Horn Bracket
Floodlight	Dialight	FLX4RBH20DB	4 Light Bull Horn Bracket in Star Configuration
Floodlight	Dialight	FLX4RPA20DB	Reducer for 4" OD round pole top
Floodlight	Dialight	FLX4SPA20DB	Internal tenon adapter for 4" square pole top
Floodlight	Dialight	FLX5SPA20DB	Internal tenon adapter for 5" square pole top
Floodlight	Dialight	FLX6SPA20DB	Internal tenon adapter for 6" square pole top

DISCLAIMER. All product information provided is, to the best of Dialight's knowledge, accurate as of the date of publication. When ordering, refer to www.dialight.com for current versions of: (a) relevant product documentation (including the relevant product data sheets); (b) Dialight terms and conditions of sale; and, (c) the relevant product warranty. To the extent that any contract is deemed formed between Dialight and the purchaser of Dialight products and/or an end-user, versions of documents available at www.dialight.com as at the date of sale shall be the versions incorporated therein. In the event of any discrepancy between this document or information provided at www.dialight.com, the latter shall prevail.

Dialight LED High Bay

Stock Part Numbers

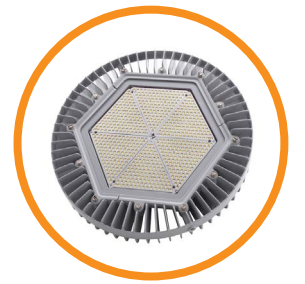


Product	Brand	Part Number	Description
High Bay	Dialight	GAUW24AG	Gateway Controller
High Bay	SafeSite®	HBDGCTN	SafeSite High Bay, Circular, 17000 Lumens, 172 Watts, 347-480V AC, Cool White, Clear Tempered Glass Lens, [CID2, CID2, CID1, CID2]
High Bay	DuroSite®	HBGCYP	DuroSite High Bay, Circular, 17000 Lumens, 172 Watts, 120 - 250V DC, Cool White, Clear Tempered Glass Lens,
High Bay	Dialight	HBXC1	High Bay Ceiling Mount
High Bay	Dialight	HBXCAB120K	Accessory - Safety Cables - HOHB - 10' - B-Line
High Bay	Dialight	HBXCG	High Bay Cable Gland
High Bay	Dialight	HBXCU	High Bay Ceiling Mount
High Bay	Dialight	HBXDC	High Bay Dust Cover
High Bay	Dialight	HBXDC45	High Bay Dust Cover, 45 slope
High Bay	Dialight	HBXDUALBRCKT	High Bay Dual Bracket
High Bay	Vigilant®	HBXGS	High Bay Glare Shield
High Bay	Dialight	HBXH	High Bay Hook
High Bay	Dialight	HBXHL	High Bay Hook and Loop
High Bay	Dialight	HBXL	High Bay Loop
High Bay	Dialight	HBXLENGC	High Bay Clear Tempered Glass
High Bay	Dialight	HBXSB	High Bay Safety Bracket Kit 316 SS (4)
High Bay	Dialight	HBXSBDK	LED Highbay Domed Sand Blast Cover
High Bay	Dialight	HBXTH347480	High Bay Accessory Top Hat 347/480V
High Bay	Dialight	HBXTH347480B	High Bay Accessory Top Hat 347/480V
High Bay	Dialight	HBXW1	High Bay Wall Mount
High Bay	Dialight	HBXW2	High Bay Swivel Bracket and Cable Gland
High Bay	Dialight	HBXW3	High Bay Swivel Bracket
High Bay	Dialight	HBXW3SSL316	Stainless steel swivel bracket, 316
High Bay	Dialight	HBXW3SSL316FT	Forward Throw Stainless steel swivel bracket, 316

DISCLAIMER. All product information provided is, to the best of Dialight's knowledge, accurate as of the date of publication. When ordering, refer to www.dialight.com for current versions of: (a) relevant product documentation (including the relevant product data sheets); (b) Dialight terms and conditions of sale; and, (c) the relevant product warranty. To the extent that any contract is deemed formed between Dialight and the purchaser of Dialight products and/or an end-user, versions of documents available at www.dialight.com as at the date of sale shall be the versions incorporated therein. In the event of any discrepancy between this document or information provided at www.dialight.com, the latter shall prevail.

Dialight LED High Bay

Stock Part Numbers

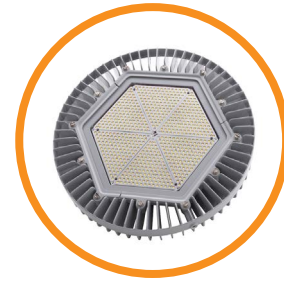


Product	Brand	Part Number	Description
High Bay	Dialight	HBXW3SSL316M	Stainless Steel Swivel High Bay Bracket
High Bay	Dialight	HE2MC4GNSNG5YR	*5YR* 100-277V 14K LM CW
High Bay	SafeSite®	HEC7MC2ANNWNGN	SafeSite High Bay, Medium, 9500 Lumens, 80 Watts, 100 - 277 VAC, Cool White 5000K, Glass - Clear, Gray, 10' [3 meter] Power Cable, [UL 844 Class I Div. 1]
High Bay	SafeSite®	HEC7MC2BNNWNGN	SafeSite High Bay, Medium, 12500 Lumens, 102 Watts, 100 - 277 VAC, Cool White 5000K, Glass - Clear, Gray, 10' [3 meter] Power Cable, [UL 844 Class I Div. 1]
High Bay	SafeSite®	HEC7MC2CNNWNGN	SafeSite High Bay, Medium, 16000 Lumens, 129 Watts, 100 - 277 VAC, Cool White 5000K, Glass - Clear, Gray, 10' [3 meter] Power Cable, [UL 844 Class I Div. 1]
High Bay	SafeSite®	HEC7MC2ENNWNGN	SafeSite High Bay, Medium, 23500 Lumens, 186 Watts, 100 - 277 VAC, Cool White 5000K, Glass - Clear, Gray, 10' [3 meter] Power Cable, [UL 844 Class I Div. 1]
High Bay	SafeSite®	HED4MC2ANNWNGN	SafeSite High Bay, Medium, 10750 Lumens, 80 Watts, 100 - 277 VAC, Cool White 5000K, Polycarbonate - Clear, Gray, 10' [3 meter] Power Cable, [UL 844 Class I Div. 2]
High Bay	SafeSite®	HED7MC2ANNWNGN	SafeSite High Bay, Medium, 11250 Lumens, 80 Watts, 100 - 277 VAC, Cool White 5000K, Glass - Clear, Gray, 10' [3 meter] Power Cable, [UL 844 Class I Div. 2]
High Bay	SafeSite®	HED7MC2BNNWNGN	SafeSite High Bay, Medium, 14250 Lumens, 102 Watts, 100 - 277 VAC, Cool White 5000K, Glass - Clear, Gray, 10' [3 meter] Power Cable, [UL 844 Class I Div. 2]
High Bay	SafeSite®	HED7MC2CNNWNGN	SafeSite High Bay, Medium, 19500 Lumens, 129 Watts, 100 - 277 VAC, Cool White 5000K, Glass - Clear, Gray, 10' [3 meter] Power Cable, [UL 844 Class I Div. 2]
High Bay	SafeSite®	HED7MC2ENNWNGN	SafeSite High Bay, Medium, 26250 Lumens, 186 Watts, 100 - 277 VAC, Cool White 5000K, Glass - Clear, Gray, 10' [3 meter] Power Cable, [UL 844 Class I Div. 2]
High Bay	SafeSite®	HED7MC2ANNWNGN	SafeSite High Bay, Circular, 11000 Lumens, 88 Watts, 100 - 277 VAC, Cool White, Clear Tempered Glass Lens, [CID2, CID2]
High Bay	SafeSite®	HED7MC2BNNWNGN	SafeSite High Bay, Circular, 14000 Lumens, 112 Watts, 100 - 277 VAC, Cool White, Clear Tempered Glass Lens, [CID2, CID2]
High Bay	SafeSite®	HED7MC2CNNWNGN	SafeSite High Bay, Circular, 18000 Lumens, 144 Watts, 100 - 277 VAC, Cool White, Clear Tempered Glass Lens, [CID2, CID2]
High Bay	SafeSite®	HED7MC2ENNWNGN	SafeSite High Bay, Circular, 26500 Lumens, 212 Watts, 110 - 277 VAC, Cool White, Clear Tempered Glass Lens, [CID2, CID2]
High Bay	Vigilant®	HEU7MC2ANNWNGN	Vigilant High Bay, Medium, 11000 Lumens, 88 Watts, 100-277 VAC, Cool White, Clear Tempered Glass Lens, [UL 1598/A]
High Bay	Vigilant®	HEU7MC2BNNWNGN	Vigilant High Bay, Medium, 14000 Lumens, 112 Watts, 100 - 277 VAC, Cool White, Clear Tempered Glass Lens, [UL 1598/A]
High Bay	Vigilant®	HEU7MC2CNNWNGN	Vigilant High Bay, Medium, 18000 Lumens, 144 Watts, 100 - 277 VAC, Cool White, Clear Tempered Glass Lens, [UL 1598/A]
High Bay	Vigilant®	HEU7MC2ENNWNGN	Vigilant High Bay, Medium, 26500 Lumens, 212 Watts, 110 - 277 VAC, Cool White, Clear Tempered Glass Lens, [UL 1598/A]
High Bay	Vigilant®	HEU7MCPENNWNGN	Vigilant High Bay, Circular, 18000 Lumens, 144 Watts, 480V, Cool White, Clear Tempered Glass Lens
High Bay	Vigilant®	HEU7MCPENNWNGN	Vigilant High Bay 26,500 Lumens, 212 Watts, 480V AC, Cool White, Clear Tempered Glass Lens
High Bay	Vigilant®	HEULMC2ANNWNGN	Vigilant High Bay, Medium, 10500 Lumens, 88 Watts, 100 - 277 VAC, Cool White, Diffused Polycarbonate Dome Lens, [UL 1598/A]
High Bay	Vigilant®	HEULMC2BNNWNGN	Vigilant High Bay, Medium, 12250 Lumens, 112 Watts, 100 - 277 VAC, Cool White, Diffused Polycarbonate Dome Lens, [UL 1598/A]
High Bay	Vigilant®	HEULMC2CNNWNGN	Vigilant High Bay, Medium, 17000 Lumens, 144 Watts, 100 - 277 VAC, Cool White, Diffused Polycarbonate Dome Lens, [UL 1598/A]

DISCLAIMER. All product information provided is, to the best of Dialight's knowledge, accurate as of the date of publication. When ordering, refer to www.dialight.com for current versions of: (a) relevant product documentation (including the relevant product data sheets); (b) Dialight terms and conditions of sale; and, (c) the relevant product warranty. To the extent that any contract is deemed formed between Dialight and the purchaser of Dialight products and/or an end-user, versions of documents available at www.dialight.com as at the date of sale shall be the versions incorporated therein. In the event of any discrepancy between this document or information provided at www.dialight.com, the latter shall prevail.

Dialight LED High Bay

Stock Part Numbers

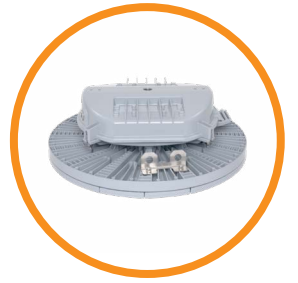


Product	Brand	Part Number	Description
High Bay	DuroSite®	HEULMC2ENNWNGN	DuroSite High Bay 23250 Lumens, 212 Watts, 110 - 277 VAC, Cool White, Diffused Polycarbonate Dome Lens, [UL 1598/A]
High Bay	Vigilant®	HEU4MC2ANNWNGN	Vigilant High Bay, Medium, 10750 Lumens, 80 Watts, 100 - 277 VAC, Cool White 5000K, Polycarbonate - Clear, Gray, 10' [3 meter] Power Cable, [UL 1598/A]
High Bay	Vigilant®	HEU4MC2BNNWNGN	Vigilant High Bay, Medium, 13750 Lumens, 102 Watts, 100 - 277 VAC, Cool White 5000K, Polycarbonate - Clear, Gray, 10' [3 meter] Power Cable, [UL 1598/A]
High Bay	Vigilant®	HEU4MC2ENNWNGN	Vigilant High Bay, Medium, 25250 Lumens, 186 Watts, 100 - 277 VAC, Cool White 5000K, Polycarbonate - Clear, Gray, 10' [3 meter] Power Cable, [UL 1598/A]
High Bay	Vigilant®	HEU4MC2ENPWNGN	Vigilant High Bay, Medium, 25250 Lumens, 186 Watts, 100 - 277 VAC, Cool White 5000K, Polycarbonate - Clear, Gray, Safety Retention Tabs, 10' [3 meter] Power Cable, [UL 1598/A]
High Bay	Vigilant®	HEU7MC2ANNWNGN	Vigilant High Bay, Medium, 11250 Lumens, 80 Watts, 100 - 277 VAC, Cool White 5000K, Glass - Clear, Gray, 10' [3 meter] Power Cable, [UL 1598/A]
High Bay	Vigilant®	HEU7MC2BNNWNGN	Vigilant High Bay, Medium, 14250 Lumens, 102 Watts, 100 - 277 VAC, Cool White 5000K, Glass - Clear, Gray, 10' [3 meter] Power Cable, [UL 1598/A]
High Bay	Vigilant®	HEU7MC2CNNWNGN	Vigilant High Bay, Medium, 19500 Lumens, 129 Watts, 100 - 277 VAC, Cool White 5000K, Glass - Clear, Gray, 10' [3 meter] Power Cable, [UL 1598/A]
High Bay	Vigilant®	HEU7MC2ENNWNGN	Vigilant High Bay, Medium, 26250 Lumens, 186 Watts, 100 - 277 VAC, Cool White 5000K, Glass - Clear, Gray, 10' [3 meter] Power Cable, [UL 1598/A]
High Bay	Vigilant®	HEU7MCPCNNWNGN	Vigilant High Bay, Medium, 18000 Lumens, 129 Watts, 480 VAC Passive Driver (Non Dimmable), Cool White 5000K, Glass - Clear, Gray, 10' [3 meter] Power Cable, [UL 1598/A]
High Bay	Vigilant®	HEU7MCPENNWNGN	Vigilant High Bay, Medium, 27000 Lumens, 206 Watts, 480 VAC Passive Driver (Non Dimmable), Cool White 5000K, Glass - Clear, Gray, 10' [3 meter] Power Cable, [UL 1598/A]
High Bay	Vigilant®	HEULMC2ANNWNGN	Vigilant High Bay, Medium, 10250 Lumens, 80 Watts, 100 - 277 VAC, Cool White 5000K, Polycarbonate Dome - Diffused, Gray, 10' [3 meter] Power Cable, [UL 1598/A]
High Bay	Vigilant®	HEULMC2BNNWNGN	Vigilant High Bay, Medium, 13250 Lumens, 102 Watts, 100 - 277 VAC, Cool White 5000K, Polycarbonate Dome - Diffused, Gray, 10' [3 meter] Power Cable, [UL 1598/A]
High Bay	Vigilant®	HEULMC2CNNWNGN	Vigilant High Bay, Medium, 18000 Lumens, 129 Watts, 100 - 277 VAC, Cool White 5000K, Polycarbonate Dome - Diffused, Gray, 10' [3 meter] Power Cable, [UL 1598/A]
High Bay	Vigilant®	HEULMC2ENNWNGN	Vigilant High Bay, Medium, 24500 Lumens, 186 Watts, 100 - 277 VAC, Cool White 5000K, Polycarbonate Dome - Diffused, Gray, 10' [3 meter] Power Cable, [UL 1598/A]
High Bay	Dialight	HLXW2	High Bay 25K Bracket and Cable Gland
High Bay	Dialight	HLXW3	High Bay 25k Swivel Bracket
High Bay	Vigilant®	VEU7MC2JNNWNGN	Vigilant Ultra-Efficient High Bay, Medium, 37400 Lumens, 230 Watts, 100-277 VAC/120-250 VDC, Cool White 5000K, Glass - Clear, , 10' [3 meter] Power Cable, Gray, [UL 1598/A]
High Bay	Vigilant®	VEU7MC5JNNWNGN	Vigilant Ultra-Efficient High Bay, Medium, 37400 Lumens, 230 Watts, 347/480 VAC, Cool White 5000K, Glass - Clear, , 10' [3 meter] Power Cable, Gray, [UL 1598/A]
High Bay	Vigilant®	VEU7NC2JNNWNGN	Vigilant Ultra-Efficient High Bay, Narrow, 38200 Lumens, 230 Watts, 100-277 VAC/120-250 VDC, Cool White 5000K, Glass - Clear, , 10' [3 meter] Power Cable, Gray, [UL 1598/A]
High Bay	Vigilant®	VEU7NC5JNNWNGN	Vigilant Ultra-Efficient High Bay, Narrow, 38200 Lumens, 230 Watts, 347/480 VAC, Cool White 5000K, Glass - Clear, , 10' [3 meter] Power Cable, Gray, [UL 1598/A]
High Bay	Dialight	WOSU12BG2	Occupancy Sensor (narrow angle)
High Bay	Dialight	WOSU22BG2	Occupancy Sensor (wide angle)

DISCLAIMER. All product information provided is, to the best of Dialight's knowledge, accurate as of the date of publication. When ordering, refer to www.dialight.com for current versions of: (a) relevant product documentation (including the relevant product data sheets); (b) Dialight terms and conditions of sale; and, (c) the relevant product warranty. To the extent that any contract is deemed formed between Dialight and the purchaser of Dialight products and/or an end-user, versions of documents available at www.dialight.com as at the date of sale shall be the versions incorporated therein. In the event of any discrepancy between this document or information provided at www.dialight.com, the latter shall prevail.

Dialight 60K/45K LED High Bay

Stock Part Numbers



Product	Brand	Part Number	Description
High Bay 60K/45K	Dialight	H6XCAB240K	Accessory - Safety Cables - HOHB - 20' - B-Line
High Bay 60K/45K	Dialight	H6XCAB72	Accessory - Safety Cables - HOHB - 6' - DROPS
High Bay 60K/45K	Vigilant®	H6XH	Vigilant 60K/45K Wet Location Hook
High Bay 60K/45K	Vigilant®	H7U7MCDKDNNGN	Vigilant High Output High Bay - Low Profile, Medium, 46,000 Lumens, 308 Watts, 480 VAC w/ Fuseblock, Cool White 5000K, Glass - Clear, Gray, Dimming (0-10V), [UL 1598 / UL 1598/A]
High Bay 60K/45K	Vigilant®	H7U7NC2NDNNGN	Vigilant High Output High Bay - Low Profile, Narrow, 61200 Lumens, 418 Watts, 120 - 277 VAC Integrated Driver, Cool White 5000K, Glass - Clear, Gray, Dimming (0-10V), [UL 1598 / UL 1598/A]
High Bay 60K/45K	Vigilant®	H7U7NCDNDNNGN	Vigilant High Output High Bay - Low Profile, Narrow, 61200 Lumens, 427 Watts, 480 VAC Step Down Transformer Driver, Cool White 5000K, Glass - Clear, Gray, Dimming (0-10V), [UL 1598 / UL 1598/A]

DISCLAIMER. All product information provided is, to the best of Dialight's knowledge, accurate as of the date of publication. When ordering, refer to www.dialight.com for current versions of: (a) relevant product documentation (including the relevant product data sheets); (b) Dialight terms and conditions of sale; and, (c) the relevant product warranty. To the extent that any contract is deemed formed between Dialight and the purchaser of Dialight products and/or an end-user, versions of documents available at www.dialight.com as at the date of sale shall be the versions incorporated therein. In the event of any discrepancy between this document or information provided at www.dialight.com, the latter shall prevail.

Dialight LED Low Bay

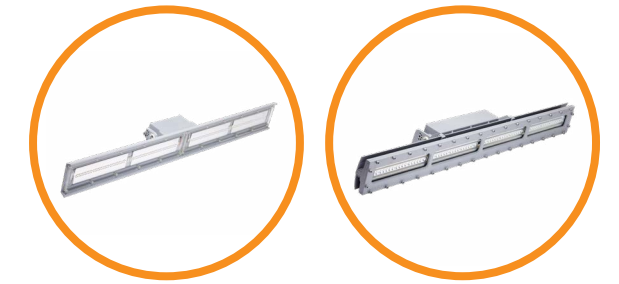
Stock Part Numbers



Product	Brand	Part Number	Description
Low Bay	DuroSite®	LEULUC24NNWNGN	DuroSite Low Bay, Circular, 4250 Lumens, 54 Watts, 100 - 277 VAC, Cool White, Diffused Polycarbonate Dome Lens, [UL 1598/A]
Low Bay	DuroSite®	LEULUC26NNWNGN	DuroSite Low Bay, Circular, 6000 Lumens, 80 Watts, 100 - 277 VAC, Cool White, Diffused Polycarbonate Dome Lens, [UL 1598/A]
Low Bay	DuroSite®	LBXLENP	Low Bay Dome Lens
Low Bay	SafeSite®	LEDLUC29NNWNGN	SafeSite Low Bay, Ultra Wide, 9000 Lumens, 80 Watts, 100 - 277 VAC, Cool White 5000K, Polycarbonate Dome - Diffused, Gray, 10' [3 meter] Power Cable, [UL 844 Class I Div. 2]
Low Bay	Vigilant®	LEULUC24NNWNGN	Vigilant Low Bay, Ultra Wide, 4000 Lumens, 42 Watts, 100 - 277 VAC, Cool White 5000K, Polycarbonate Dome - Diffused, Gray, 10' [3 meter] Power Cable, [UL 1598/A]
Low Bay	Vigilant®	LEULUC26NNWNGN	Vigilant Low Bay, Ultra Wide, 6000 Lumens, 56 Watts, 100 - 277 VAC, Cool White 5000K, Polycarbonate Dome - Diffused, Gray, 10' [3 meter] Power Cable, [UL 1598/A]
Low Bay	Vigilant®	LEULUC29NNWNGN	Vigilant Low Bay, Ultra Wide, 9000 Lumens, 80 Watts, 100 - 277 VAC, Cool White 5000K, Polycarbonate Dome - Diffused, Gray, 10' [3 meter] Power Cable, [UL 1598/A]
Low Bay	Vigilant®	LEULUN29NNWNGN	Vigilant Low Bay, Ultra Wide, 8750 Lumens, 80 Watts, 100 - 277 VAC, Neutral White 4000K, Polycarbonate Dome - Diffused, Gray, 10' [3 meter] Power Cable, [UL 1598/A]

Dialight LED Linears

Stock Part Numbers



Product	Brand	Part Number	Description
Linear	SafeSite®	LPD3C4B2W	SafeSite Linear - Low Profile, 3500 Lumens, 29 Watts, 100-277 VAC, Cool White 5000K, Diffused Polycarbonate Lens, [CID2]
Linear	SafeSite®	LPD3C4D2P	SafeSite Linear - Gen II, 3850 Lumens, 29 Watts, 100-277 VAC, Cool White 5000K, Clear Polycarbonate Lens, Low Profile [CID2]
Linear	SafeSite®	LPD3C4H2W	SafeSite Linear - Low Profile, 7100 Lumens, 60 Watts, 100-277 VAC, Cool White 5000K, Diffused Polycarbonate Lens [CID2]
Linear	SafeSite®	LPD3C4M2P	SafeSite Linear - Gen II, 7900 Lumens, 60 Watts, 100-277 VAC, Cool White 5000K, Clear Polycarbonate Lens, Low Profile, [CID2]
Linear	SafeSite®	LPD3C4M2PDR	SafeSite Linear - Gen II, 7000 Lumens, 66 Watts, 100-277V AC, Cool White, Clear Polycarbonate Lens, Low Profile, Drilling rig accessories kit [CID2]
Linear	SafeSite®	LPD3C4M2PDRWOB	SafeSite Linear - Gen II, 7000 Lumens, 66 Watts, 100-277V AC, Cool White, Clear Polycarbonate Lens, Low Profile, Drilling Rig, No Bracket [CID2]
Linear	DuroSite®	LPM3C4B2W	DuroSite Linear - Low Profile, Medium, 3500 Lumens, 29 Watts, 100-277 VAC, Cool White, Diffused Polycarbonate Lens
Linear	DuroSite®	LPM3C4D2P	DuroSite Linear - Low Profile, Medium, 3850 Lumens, 29 Watts, 100-277 VAC, Cool White, Clear Polycarbonate Lens
Linear	DuroSite®	LPM3C4H2W	DuroSite Linear - Low Profile, Medium, 7100 Lumens, 60 Watts, 100-277 VAC, Cool White, Diffused Polycarbonate Lens
Linear	DuroSite®	LPM3C4M2P	DuroSite Linear - Low Profile, Medium, 7900 Lumens, 60 Watts, 100-277 VAC, Cool White, Clear Polycarbonate Lens
Linear	Dialight	LPXW4	Mounting bracket. Can be angled at 0, 30, 45, 60 and 90 degrees.
Linear	Dialight	LPXW4LP	Low profile mounting bracket. Can be angled at 0 and 15 degrees.
Linear	SafeSite®	LSC3C4D3GEX	SafeSite Linear, 3600 Lumens, 34 Watts, 100-277 VAC, Cool White 5000K, Clear Tempered Glass Lens, 2 Feet [CID1]
Linear	SafeSite®	LSC3C4M3GEX	SafeSite Linear, 7250 Lumens, 68 Watts, 100-277 VAC, Cool White 5000K, Clear Tempered Glass Lens, 4 feet [CID1]
Linear	SafeSite®	LSC3C4M3GEXDR	SafeSite Linear, 7250 Lumens, 78 Watts, 100-277V AC, Cool White, Clear Tempered Glass Lens, 4 feet with drilling rig accessories [CID1]
Linear	Dialight	LSXENDCAPKIT	Accessory- Chain mount brackets with 2 mounting brackets and hardware
Linear	Dialight	LSXW4	Accessory- Mounting brackets for 0, 30, 45, 60 or 90 degrees with mounting bracket and mounting hardware, CID2
Linear	Dialight	LSXW5	Accessory- Mounting brackets for 0, 30, 45, 60 or 90 degrees with mounting bracket and mounting hardware, CID
Linear	SafeSite®	LTD3C4D2P	SafeSite Linear - Gen II, 3850 Lumens, 29 Watts, 100-277 VAC, Cool White 5000K, Polycarbonate Clear Lens, [CID2]
Linear	SafeSite®	LTD3C4M2P	SafeSite Linear - Gen II, 7900 Lumens, 60 Watts, 100-277 VAC, Cool White 5000K, Polycarbonate Clear Lens, [CID2]
Linear	SafeSite®	LTD3C4M2PDR	SafeSite Linear - Gen II, 7000 Lumens, 66 Watts, 100-277V AC, Cool White, Polycarbonate Clear Lens, Drilling rig accessories kit [CID2]
Linear	DuroSite®	LTM3C4D2P	DuroSite Linear - Top Conduit, Medium, 3850 Lumens, 29 Watts, 100-277 VAC, Cool White, Clear Polycarbonate Lens
Linear	DuroSite®	LTM3C4H2W	DuroSite Linear - Top Conduit, Medium, 7100 Lumens, 60 Watts, 100-277 VAC, Cool White, Diffused Polycarbonate Lens
Linear	DuroSite®	LTM3C4M2P	DuroSite Linear - Top Conduit, Medium, 7900 Lumens, 60 Watts, 100-277 VAC, Cool White, Clear Polycarbonate Lens

DISCLAIMER. All product information provided is, to the best of Dialight's knowledge, accurate as of the date of publication. When ordering, refer to www.dialight.com for current versions of: (a) relevant product documentation (including the relevant product data sheets); (b) Dialight terms and conditions of sale; and, (c) the relevant product warranty. To the extent that any contract is deemed formed between Dialight and the purchaser of Dialight products and/or an end-user, versions of documents available at www.dialight.com as at the date of sale shall be the versions incorporated therein. In the event of any discrepancy between this document or information provided at www.dialight.com, the latter shall prevail.

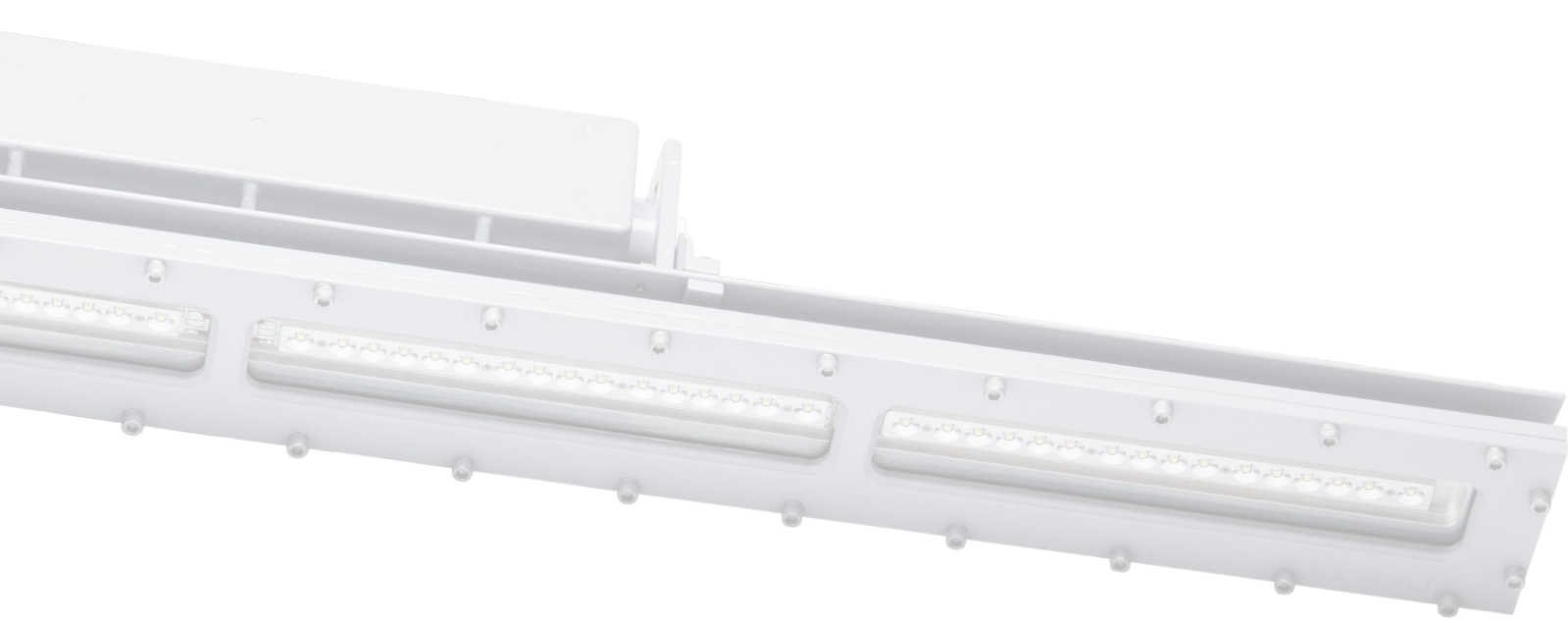
DISCLAIMER. All product information provided is, to the best of Dialight's knowledge, accurate as of the date of publication. When ordering, refer to www.dialight.com for current versions of: (a) relevant product documentation (including the relevant product data sheets); (b) Dialight terms and conditions of sale; and, (c) the relevant product warranty. To the extent that any contract is deemed formed between Dialight and the purchaser of Dialight products and/or an end-user, versions of documents available at www.dialight.com as at the date of sale shall be the versions incorporated therein. In the event of any discrepancy between this document or information provided at www.dialight.com, the latter shall prevail.

Dialight LED Linears

Stock Part Numbers



Product	Brand	Part Number	Description
Linear	Dialight	LTX8FTENDCAP	End to end linear mounting kit
Linear	Dialight	LTXENDCAPKIT	Accessory- Chain mount brackets with 2 mounting brackets and hardware
Linear	Dialight	LTXLENDP	Accessory - Clear Poly Replacement lens
Linear	Dialight	LTXSAFEKIT	Accessory - LIN II END CAP SAFETY CABLES
Linear	Dialight	LTXW4	Accessory- Mounting brackets for 0, 30, 45, 60 or 90 degrees with mounting bracket and mounting hardware
Linear	Dialight	LTXW4LP	Accessory - Mounting Bracket, 0 or 15 degrees, Low Profile



DISCLAIMER. All product information provided is, to the best of Dialight's knowledge, accurate as of the date of publication. When ordering, refer to www.dialight.com for current versions of: (a) relevant product documentation (including the relevant product data sheets); (b) Dialight terms and conditions of sale; and, (c) the relevant product warranty. To the extent that any contract is deemed formed between Dialight and the purchaser of Dialight products and/or an end-user, versions of documents available at www.dialight.com as at the date of sale shall be the versions incorporated therein. In the event of any discrepancy between this document or information provided at www.dialight.com, the latter shall prevail.

Dialight LED Streetlight

Stock Part Numbers



Product	Brand	Part Number	Description
Streetlight	StreetSense®	SL3C5SLGG	StreetSense Streetlight Type III, 23400 Lumens, 228 Watts, 100 - 277 VAC, Cool White, Gray, Glass Lens, Shorting Cap



Dialight LED Wallpack

Stock Part Numbers



Product	Brand	Part Number	Description
Wallpack	DuroSite®	W2U12GF	DuroSite LED Wallpack, Type III, 15600 Lumens, 120 Watts, 100-277 VAC, 3000K/4000K/5000K, Gray, Dimming (0-10V), Switchable Lumen (25%/50%/75%/100%), Switchable CCT, Battery Backup, [UL1598]
Wallpack	DuroSite®	W2U12GN	DuroSite LED Wallpack, Type III, 15600 Lumens, 120 Watts, 100-277 VAC, 3000K/4000K/5000K, Gray, Dimming (0-10V), Switchable Lumen (25%/50%/75%/100%), Switchable CCT, [UL1598]
Wallpack	DuroSite®	W2U12ZF	DuroSite LED Wallpack, Type III, 15600 Lumens, 120 Watts, 100-277 VAC, 3000K/4000K/5000K, Bronze, Dimming (0-10V), Switchable Lumen (25%/50%/75%/100%), Switchable CCT, Battery Backup, [UL1598]
Wallpack	DuroSite®	W2U12ZN	DuroSite LED Wallpack, Type III, 15600 Lumens, 120 Watts, 100-277 VAC, 3000K/4000K/5000K, Bronze, Dimming (0-10V), Switchable Lumen (25%/50%/75%/100%), Switchable CCT, [UL1598]
Wallpack	DuroSite®	W2U8GF	DuroSite LED Wall Pack, Type III, 10400 Lumens, 80 Watts, 100-277 VAC, 3000K/4000K/5000K, Gray, Dimming (0-10V), Switchable Lumen (25%/50%/75%/100%), Switchable CCT, [UL1598]
Wallpack	DuroSite®	W2U8GN	DuroSite LED Wall Pack, Type III, 10400 Lumens, 80 Watts, 100-277 VAC, 3000K/4000K/5000K, Gray, Dimming (0-10V), Switchable Lumen (25%/50%/75%/100%), Switchable CCT, [UL1598]
Wallpack	DuroSite®	W2U8ZF	DuroSite LED Wall Pack, Type III, 10400 Lumens, 80 Watts, 100-277 VAC, 3000K/4000K/5000K, Gray, Dimming (0-10V), Switchable Lumen (25%/50%/75%/100%), Switchable CCT, [UL1598]
Wallpack	DuroSite®	W2U8ZN	DuroSite LED Wall Pack, Type III, 10400 Lumens, 80 Watts, 100-277 VAC, 3000K/4000K/5000K, Gray, Dimming (0-10V), Switchable Lumen (25%/50%/75%/100%), Switchable CCT, [UL1598]



DISCLAIMER. All product information provided is, to the best of Dialight's knowledge, accurate as of the date of publication. When ordering, refer to www.dialight.com for current versions of: (a) relevant product documentation (including the relevant product data sheets); (b) Dialight terms and conditions of sale; and, (c) the relevant product warranty. To the extent that any contract is deemed formed between Dialight and the purchaser of Dialight products and/or an end-user, versions of documents available at www.dialight.com as at the date of sale shall be the versions incorporated therein. In the event of any discrepancy between this document or information provided at www.dialight.com, the latter shall prevail.

North American HQ

1501 Route 34 South
Farmingdale, NJ 07727

Tel: 732-919-3119

Fax: 732-751-5778

info@dialight.com



WARNING / DISCLAIMERS:

Installation & secondary retention. The use of these products without proper installation (including secondary retention / netting) and periodic inspections, could cause severe injury or death. Dialight recommends that all installations should use secondary retention / netting (appropriate to the installation environment) as applicable. Dialight products are intended for ultimate purchase, installation and operation by knowledgeable persons trained in the functional assessment, installation, use and maintenance of such products and all customers (including but not limited to end customers) are responsible for assessing the suitability of Dialight products for any given installation requirement. It is the exclusive responsibility of the contractor, installer and/or end-user to: (a) determine the suitability of the product for its intended application; and, (b) ensure that the product is safely installed (with secondary retention / netting as appropriate) and in compliance with all applicable laws and regulations.

Product specifications & warranties. All product information provided is, to the best of Dialight's knowledge, accurate as of the date of publication. All values and performance data herein are design or typical values when measured under laboratory conditions. The information herein is subject to change without notice. The products / software detailed herein are subject to applicable warranties and terms and conditions of use/purchase. Unless agreed otherwise in writing by an authorized representative of Dialight, Dialight does not represent that its products are fit for any particular purpose and accepts no liability for the installation and/or unauthorised use of its products. When ordering, refer to www.dialight.com for current versions of: (a) relevant product documentation (including relevant product data sheets); (b) Dialight terms and conditions of sale; and, (c) the relevant product warranties. To the extent that any contract is deemed formed between Dialight and the purchaser of Dialight products and/or an end-user, versions of documents available at www.dialight.com as at the date of sale shall be the versions incorporated therein. In the event of any discrepancy between this document and information provided at www.dialight.com, the latter shall prevail.

Exclusion of liability. To the extent permissible under the relevant law, Dialight disclaims all liability for personal injury and/or other damage resulting from any dislodgment or other dislocation of its products. Whilst Dialight has used its reasonable endeavours to ensure the completeness and accuracy of information herein, Dialight does not assume any liability for damages resulting from use of this information or for any third-party representations made in relation to Dialight products.